

Gloria

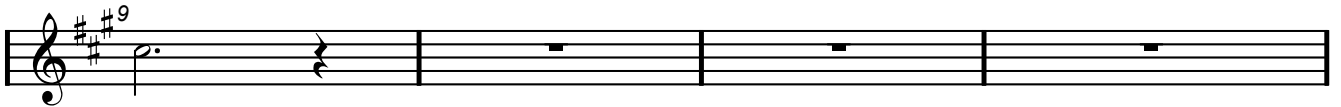
Geige



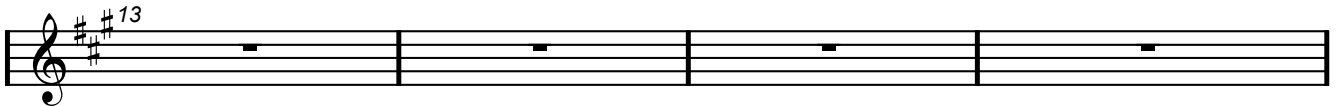
Geige



Geige



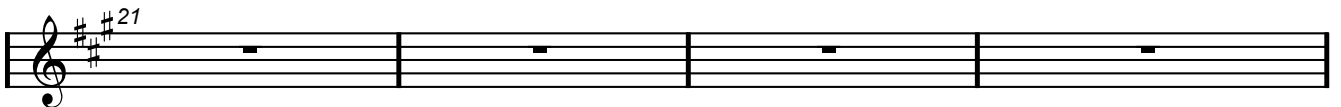
Geige



Geige



Geige



Geige



Geige



Geige

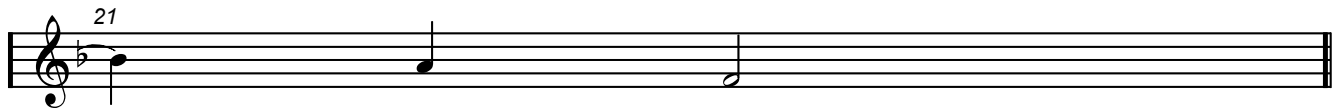
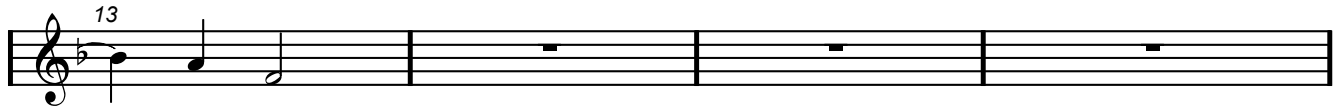
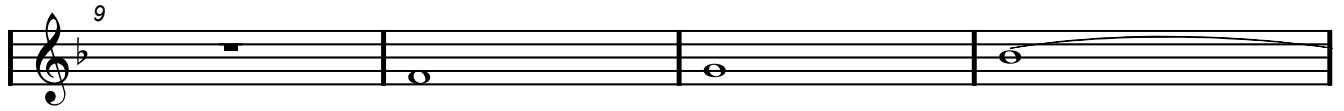
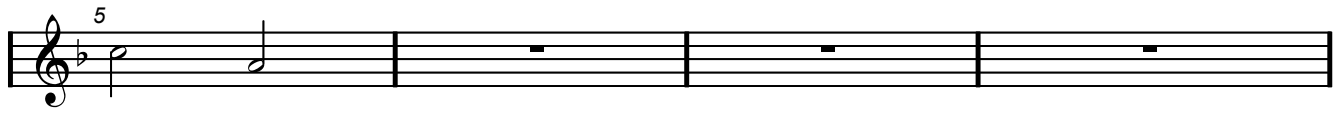


Geige



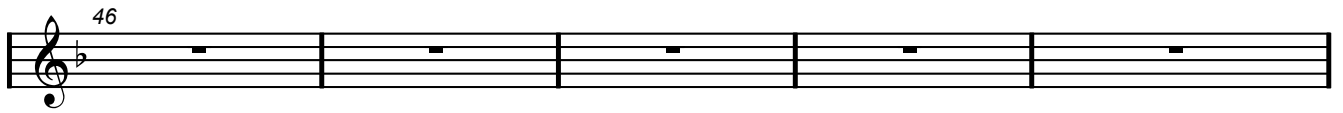
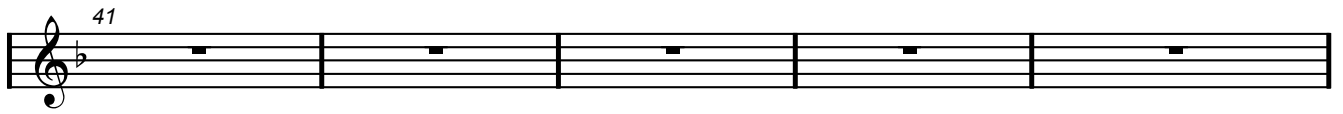
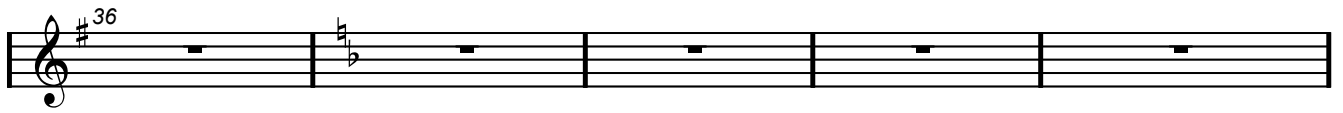
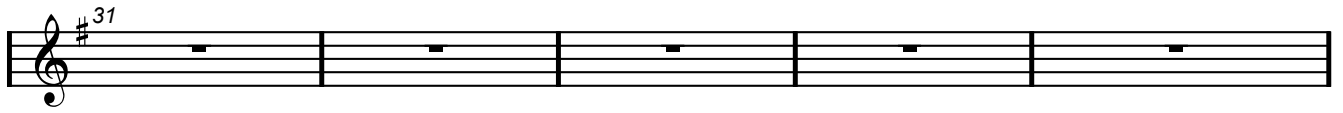
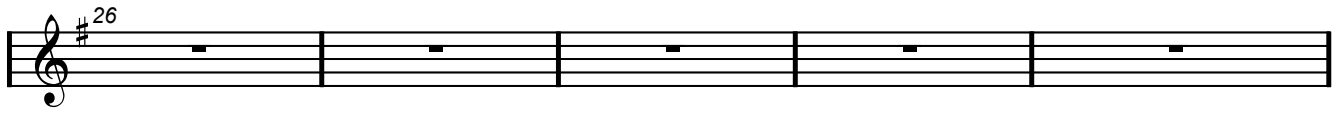
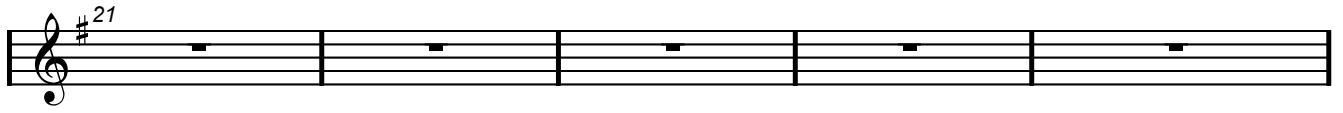
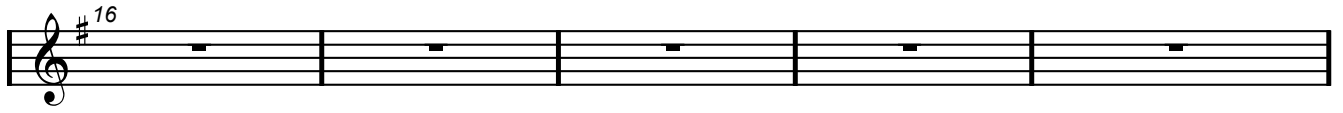
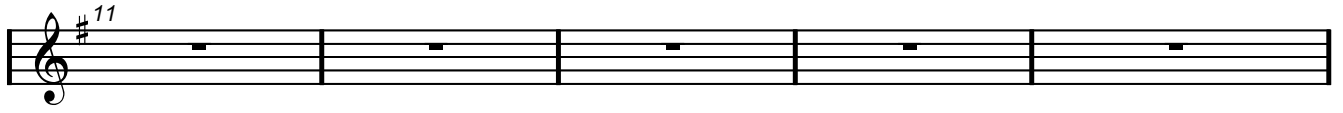
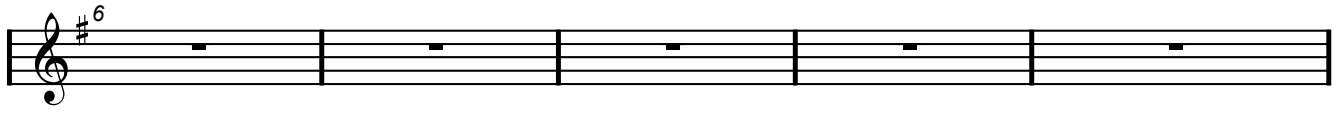
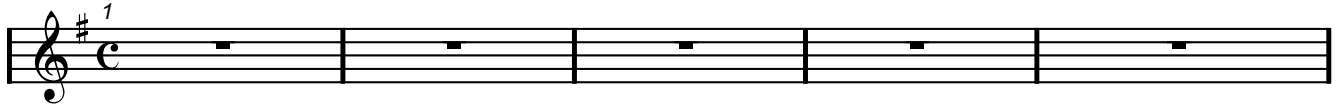
Halleluja

Geige



Sanctus

Geige



Agnus Dei

Geige

Violin score for Agnus Dei, measures 1-81. The score is written in G major (one sharp) and 3/4 time. It consists of 17 staves of music. The first five staves (measures 1-25) are mostly rests. The sixth staff (measures 26-30) contains a melodic line. The seventh staff (measures 31-35) is mostly rests. The eighth staff (measures 36-40) contains a melodic line. The ninth staff (measures 41-45) is mostly rests. The tenth staff (measures 46-50) contains a melodic line. The eleventh staff (measures 51-55) is mostly rests. The twelfth staff (measures 56-60) contains a melodic line. The thirteenth staff (measures 61-65) contains a melodic line. The fourteenth staff (measures 66-70) contains a melodic line. The fifteenth staff (measures 71-75) is mostly rests. The sixteenth staff (measures 76-80) contains a melodic line. The seventeenth staff (measures 81) contains a melodic line.

Segenslied

Geige

